

# T4 F/N/V, The impossible is their specialty.



THE IMPOSSIBLE IS THEIR SPECIALITY





# Supercomfort, Superpowerful, Supersafe and Superconnected for every job.

The first 700C crawler was produced in 1932 and the first specialised tractor in 1951, the 25RS. Built on decades of experience, New Holland always imagines the future and adapts its products to customers' expectations.

The new New Holland T4 F/N/V and TK4 ranges are fully redesign and developed to do all kinds of jobs in any condition. Slopes and flat areas, vineyards, mega orchards, greenfield... the impossible is their specialty. With a huge level of comfort, safety and visibility, the new VisionView™ cab provides the best working environment for long working days. Up to date - our new ranges are connected and help you to monitor each task for perfect traceability. The excellence of all specialised products confirms New Holland as a world leader.

The Jesi production facility is not only respecting the environment while producing Stage V tractors but is also reducing the carbon footprint of the entire plant. It won the Ecohitech award for its progress, a mean feat for a plant that never makes the same tractor twice!

With a strong dealer network, New Holland is always close to you, with its trained and certified teams.







## Contents

<b>02</b>	Overview
<b>04-05</b>	A solution for every condition
<b>06-07</b>	The New Holland History
<b>08-09</b>	Exclusive features
<b>10-11-12-13</b>	Operator environment
<b>14-15</b>	Engine and Transmissions
<b>16-17-18-19</b>	Hydraulics and Axles
<b>20-21</b>	Precision Farming offering
<b>22-23</b>	New Holland around the world
<b>24-25-26-27</b>	Specifications



# The specialist for specialised crops.

Whether you are a winegrower, a fruit or vegetable producer, a municipality, whether you work in the valley or in the mountains, New Holland has the tractor for you.

- "Small" hectare size, labour intensive & high value crop businesses
- From small private to corporate
- Extensive vineyard and orchard companies
- Contractors



## Vineyard & Narrow Operations

From 1061mm to 2024mm width



## Orchard, Tree & Alpine Operations

45% maximum slope



## Low Canopy Operations

1.31m in top of the hood



## Harvesting

From 0.90m between rows









# 90 years of constant improvements.



Only New Holland can offer you such a wide choice of wheeled and crawler tractors. All purpose tractors that are designed and developed to effectively work between any row, with working widths from just 1.06m up to 2.5m. That's not all. Every New Holland product comes with the right features to do the job: powerful, efficient and clean engines, super comfortable and safe cabs to low clearance ROPS models, connected and the perfect combination of axles and hydraulics to easily manage any kind of implement.

## The history of specialist tractors



- 1932:** The 700C takes to the field and mechanises farming in Italy and worldwide.
- 1951:** The 25RS narrow tractor has the privilege of becoming the first specialist tractor. The founder of a successful dynasty.
- 1965:** The Diamante range is launched and benefits from Pininfarina design.
- 1985:** The arrival of Lift-O-Matic™ technology makes it possible to keep fitted implements at a pre-set depth at all times.
- 1989:** The Steering-O-Matic™ system makes its début, enabling operators to drive crawler tractors with one hand.
- 1997:** The TNF range is launched. Representing the latest state of the art, SuperSteer™ and automatic 4WD drive, which until then had been the preserve of high-powered tractors, are introduced into the compact architecture of specialist tractors.
- 2008:** The TK4000 becomes super-quiet and ultra-comfortable thanks to S-Track vibration damping technology.

- 2008:** The T4000 F/N/V range combines the productivity and effectiveness of specialist tractors with absolute operator comfort.
- 2010:** The TK4000 is built around the operator, with a single factory-fitted cab and unique Steering-O-Matic™ Plus technology, for one-handed driving and clutch operation.
- 2012:** The T4 F/N/V range with mid-mount valves delivers higher productivity and enhanced ergonomics. Variable application rate technology also makes its début on this tractor.
- 2015:** Blue Cab™ 4 option on the new T4 range of specialist tractors, with full protection against dust, aerosols and vapours.
- 2019:** Terraglide™ front axle suspension on the T4 F/N/V ranges.
- 2021:** New range of T4 F/N/V Stage V is launched. More power, more comfort, more technologies for every usage.
- 2021:** The VisionView™ cab revolutionnate the specialty segment.
- 2023:** The suspended Comfort Ride™ cab got a silver medal at SITEVI.



### Specialisation supplied as standard

New Holland is widely recognised as the world leader in specialist wheeled and crawler tractors. There's nothing new about this: with over 70 years' experience, farmers know that a New Holland tractor is a guarantee of quality. The company's first crawler tractor, the 700C, was produced in 1932. These tractors are universally known for having mechanised not only vineyards and orchards, but also farming as a whole, worldwide. Specialist wheeled tractors can trace their DNA back to 1951, when the first narrow tractor, the 25RS, was built. The Jesi plant is committed to improving its carbon footprint and won the Ecohitech award for its progress, which is considerable, bearing in mind that the factory never builds two tractors the same!





# Exclusive features only from New Holland.

With more than 9 decades of experience and innovation, our engineers develop features that make your daily job easier to save time on the headland, work in a safe environment and reduce soil compaction. New Holland innovates brand features which shape the future of speciality tractors. This never stops, as New Holland is always investing in R&D.

## **SuperSteer™ the tightest turning angle**

With SuperSteer™, New Holland improves the turning circle of the tractor and delivers a steering angle of up to 76°. Incomparable turning radius means no time is lost at the headland resulting in increased productivity. Thanks to SuperSteer™, there is great versatility for front tool mounting. The increased wheelbase transfers more weight to the front of the tractor, that means high grip and stability in all working conditions.

## **New VisionView™ cab**

A distinctive feature of the New Holland VisionView™ cab is the high visibility front windscreen that allows the operator to watch and control a typical front implement used in vineyard applications such as a front trimmer, pruner or streaper machines. The VisionView™ cab is also best in class in term of noise level.

## **Blue Cab™ 4 filtration**

The Blue Cab™ 4 filtration offers protection and safety for the operator thanks to the double filtration system.

## **The new Comfort Ride™ suspended cab**

The T4F can be equipped with the new Comfort Ride cab suspension. This new system awarded at the SITEVI show 2023 reduces cab vibrations by up to 60% on the road and 15% in the field without generating lateral movements.







### InfoView™

The large LCD flat colour screen displays all the information the operator needs to know. The InfoView™ has 4 different areas of information and is very easy to see. Thanks to its design and ergonomics, this screen does not obstruct the view from the drivers seat. It is possible to set the electrohydraulic remotes (EHR) flow, the category 4 system, the maintenance notifications, the electronic draft control (EDC) and many other functions.



### Rear HPL with load sensing and power beyond connections

The new Load Sensing rear linkage ensures the operator has enough hydraulic flow when the rear linkage is raised. The result is uncompromised performance of the hydraulic remote valves when operating an implement simultaneously. Working at lower pressure also ensures less oil heating resulting in lower fuel consumption. The Power Beyond connectors are the best solution to work with high oil flow dependant implements. It also contributes to a reduction in oil heating and reduced fuel consumption.



### The Terraglide™ suspended front axle

Terraglide™ is a new way of driving, to guarantee the operator better comfort, better stability and improved safety. The Terraglide™ front axle system offers an incredible level of comfort for the driver, when undertaking road and field work.





# Superview: VisionView™ cab.

## The comfort of open field tractors: better visibility for front application.

### The new VisionView™ cab

An ergonomic, spacious and practical operator environment is a must for day-long productivity. That is what New Holland's all new VisionView™ cab delivers. Want all round visibility? Whether you're in the yard, in the vineyard or on the road, you'll have an uninterrupted productivity enhancing view. Always. The flat deck floor and 360° LED light packages further enhance day long comfort.

### LED lights

With the Blue Cab™ 4 system, the lighting package has raised the lighting bar. The spread of the LED light has been engineered for maximum visibility outside the tractor and the working area. A total of 8 working lights produces the best visibility for all kinds of work.

### Minimised cab noise level

On T4 F/N/V, the sound levels inside the cabin is lower than the previous range. Noise and vibration levels are tightly controlled, all contributing to reduced operator fatigue. The best in class in-cab noise levels of just 72dB(A) enhance the driving experience.

### More visibility

The VisionView™ cab offers more comfort to the operator with more visibility. This new cab, equipped with 4 pillars, has a high visibility front windscreen which allows the operator a 360° view. With this new Cab, there are no side obstructions and there is a great side view thanks to the ATS (After Treatment System) now 100% under the hood. The rear visibility has been significantly improved thanks to the repositioning of the fuel tank, from the rear to its new position under the hood and platform.

### The armrest and the Dual Command™

All the controls have been positioned in an ergonomic manner and located to the right of the operator. The de-clutch function on the back of the gearstick allows the operator to change gear without using the clutch pedal. This feature gives faster and easier gear changes to speed or slow down the tractor. The Engine Speed Management (ESM) gives full control of the RPM to the operator. Two different setting enables the operator to switch the RPM speed at the touch of a button. The operator area has been improved with the introduction of USB plugs, more power sockets and a storage compartment for your phone.







### **The real flat deck**

In the new T4 F/N/V tractor, there is a real flat deck. Thanks to this the floor is left clear as there is no central transmission tunnel in the way. This provides the operator easy access when getting in and out of the cab and more foot room. Brake and clutch pedals are suspended to keep the floor clear.

### **The new Comfort Ride™ suspended cab**

This new feature provides a lot of comfort using smart and proven design. The system uses front silent block and a combination of hydro-mechanical shock absorber and Panhard bar at the rear. All these elements allows the Comfort Ride™ system to absorb vibrations, shock and oscillations without generating lateral movements. The cab suspension is easily adjustable in 5 different positions to maximize the performances in all conditions and to facilitate the operation, a visual indicator on the rear left hand side of the cab.

### **The suspended seat**

The seat is designed around the operator; for the best operator comfort. Outward visibility has been further enhanced as a result of improvements in the driver seat position. This has been achieved by moving the seat further back and further up, compared to the previous generation. The adjustable and suspended seat ensures driving comfort and delivers an unrivalled view for the operator.





# InfoView™: inspired by bigger tractors.



## InfoView™ Dash Display

The large LCD flat colour screen, displays all the information the operator needs to know. The screen is divided in 4 areas which all have specific functions.

The InfoView™ menus are controlled by an encoder located in an ergonomic position on the right hand side console.



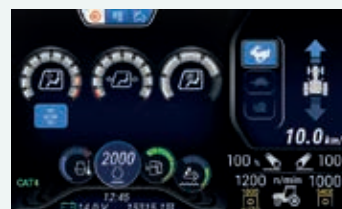
The home screen easily takes you to 8 submenus to adjust functions such as hydraulic oil flow, PTO settings, implement size to show the amount of area worked and Blue Cab™ 4 management,... Thanks to its design and ergonomics, this screen is easy to use and is in a perfect position to ensure an unrestricted view outside the cab.



Electrohydraulic remotes flow set up



Area worked



Category 4 filtration management



Electronic draft control





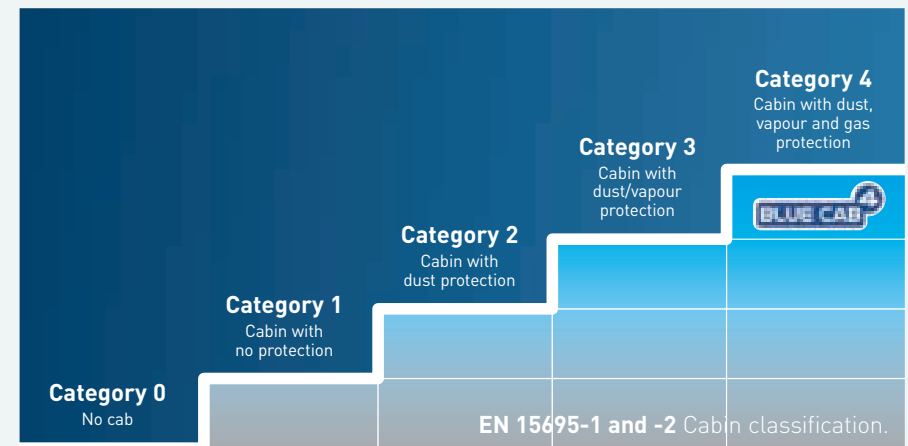
# Supersafety: the famous Blue Cab™ 4.

## Certified technology

Blue Cab™ 4 option with enhanced filtration against dust, aerosols and fumes. Compliant with EN 15695-2:2009 for filtration and EN 15695-1:2009 for pressurisation, Blue Cab™ 4 offers category 4 protection level. The filters are designed to have an extended working life. The side grill protection has been improved for better filter protection. The filtration system is an innovative double filtration system: the two filters are in the same roof system and the operator can easily switch from category 2 to 4, at the touch of a button. Thanks to the Blue Cab™ 4, the operator safety is guaranteed.

## More safety

Blue Cab™ 4 is the best solution for operator's safety. It has been significantly upgraded compared to the previous generation T4 models, the system ensures safety for the operator when undertaking chemical applications such as spraying. The whole cab system has been tested in the field with 20 different pesticides.





## Superpowerful: a concentrate of power.

T4 F/N/V tractors are equipped with the famous F34 and F36 high performance 4-cylinder FPT Industrial engines with Stage V electronic fuel injection, ranging from 75 to 120hp. The F34 and F36 engines offer fantastic fuel efficiency thanks to the ability to achieve max torque at just 1,300rpm. The AdBlue and fuel tanks are perfectly sized for long working days. FPT Industrial engines provide market leading performance and reliability. With 600hr service intervals on the T4 Speciality range delivering low cost of ownership and a reduction in downtime.



### Efficient engine delivering high performance

F34 and F36 engines by FPT are compact power plants delivering high performance and fuel efficiency. The engine and auxiliary components have been specifically designed to provide the lowest possible engine hood line. The results is improved forward visibility for the operator, more working comfort and more versatility with implements. Although more compact, the engine is super accessible. Access to the filters and service points is easy with everything located on the left side of the engine.



### A sustainable engine

The entire T4 F/N/V range complies with Stage V emissions standards, on the T4.90 models and above this is achieved thanks to the new compact HI-eSCR 2 technology developed by FPT Industrial. Stage V emissions standards mandate a further 40% reduction in Particulate Matter, compared to previous engine regulations. Delivering sustainability and reduced carbon footprint.



### New generation look

The new generation hood styling has been developed to deliver market leading forward visibility. Accessibility has also been considered, especially when replenishing Diesel and AdBlue, thanks to a intuitive flip up grill which provides fast and easy access to the tanks.



# Efficient, reliable and easy to use transmission.

Thanks to the modular concept of the new T4 F/N/V tractors, the transmissions can easily be adapted to the needs of the operator. The driveline has been redesigned to fit with all models from T4.80 to T4.120 and provide more comfort during long working days and greater reliability thanks to the wet clutch.

Advanced optional technological features include Dual Command™ Hi-Lo, Power Clutch push-button, Park lock system, creeper and the famous Powershuttle. The configurable Powershuttle has 3 pre-set modes: soft, medium or hard and is easily selected at the touch of a button.

## The ultimate ergonomic farming experience

The T4 F/N/V tractors offer sophisticated features that are intuitive and easy to use. The Command Arc hosts all key controls. Throttle transmission, PTO and hydraulics. All controls and switches fall intuitively to hand for the operator.

## A versatile PTO for the best comfort and safety

The new PTO design allows different levels of engagement depending on the implement. There are 3 modes, soft, medium or hard to ensure a progressive start of the PTO all at the touch of a button.



	ROPS	CAB
Powershuttle 16x16 - 40 km/h	○	○
Dual Command™ 32x16 - 40 km/h	○	○
Powershuttle + Creeper 44x16 - 40 km/h	○	○
Shuttle Command™ 16x16 - 40 km/h	○	-
Split Command™ 32x16 - 40 km/h	○	-
Shuttle Command™ + Creeper 28x16 - 40 km/h	○	-

○ Optional    - Not available





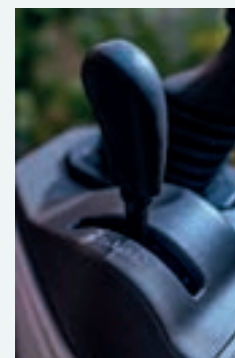
# Hydraulic controls at your fingertips.

The new armrest control is super intuitive. It provides more safety and easy management.



## Hydraulic performance

Have you ever thought about just how much hydraulic flow you actually need? All T4 F/N/V tractors are fitted with an open centre double pump hydraulic system with cooler as standard. Dedicated 64Lpm pump is more than sufficient for most applications. An optional 80Lpm option is available that will power even the most demanding implements. The widest offering from mechanical to electronic remotes, rear to mid mounts, and the option of a dedicated valve for the hydraulic top link, stabilisers and lift rod all controlled at a touch of a switch, makes the new T4 specialty the new benchmark.



## Lift-O-Matic™ Plus system: speed and precision

Lift-O-Matic™ is an award-winning mechanical draft control system which allows the operator to raise or lower the rear linkage when making a headland turn, while maintaining position and draft settings. When pushing/pulling the lever, if released, the implement immediately stops at the height corresponding to the actual implement position. A gentle push or pull of this convenient lever allows for minor adjustments.



# Superproductivity: multiple implements simultaneously.

## Front implement

Maximum lift capacity: 1500kg  
Double acting and suspended with accumulator  
Available with or without front PTO

## Rear implement

Maximum lift capacity up to: 2520kg  
Completely redesigned  
with 2 external cylinders

## Midmount

Up to 8 mid mount couplers  
on right side and a free flow return

Mechanical Draft Control with proven Lift-O-Matic™ Plus system is standard with Electronic Draft Control option available on all models.



# Supercomfort: a large front axles' range.

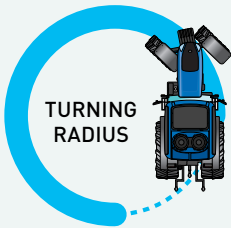
T4 F/N/V tractors have 3 different axles to choose from Standard, SuperSteer™ and the advanced Terraglide™. The legendary SuperSteer™ front axle delivers an effective steering angle up to 76°. The Terraglide™ front axle suspension is proven to protect the tractor, mounted implements, and the operator from rough and undulating terrain, especially during transport. In the field the advanced suspension system maintains contact between the tyre and the ground to improve traction and safety.

### The Terraglide™ experience, for an improved level of comfort and performance

- The Terraglide™ suspended front axle offers to the driver:
- the ability to set the suspension height
  - the auto height adjustment, when an implement is hitched at the front
  - anti-lift and anti-dive compensation
  - four driving mode: soft, medium, hard and locked
  - 3D compensation, to perfectly follow the floor
- All that adjustable from the cab with one button.

### The ultimate turning radius

Models	Turning radius
T4V	–
T4N	3.39m
T4F	3.31m



### SUPERSTEER™ AXLE

Renowned super tight turning

Models	work width (m) - with tyres (rear)										
	1	1.1	1.2	1.3	1.4	1.5	1.6	1.7	1.8	1.9	2
T4V	min. 1.06 - 280/85R28 max. 1.5 - 360/70R28										
T4N			min. 1.23 - 320/85R24 max. 1.63 - 420/70R24								
T4F					min. 1.38 - 320/85R28 max. 1.933 - 420/70R28						



### Trelleborg PneuTrac Tyre

PneuTrac is a hybrid solution that combines the advantages of a radial agricultural tyre in terms of efficiency, comfort and handling with the wide footprint and traction benefits of a track. It delivers unbeatable performance in both steep slopes and muddy terrain. On road applications, the hybrid nature of the PneuTrac assures safety, handling and comfort along with fuel economy.







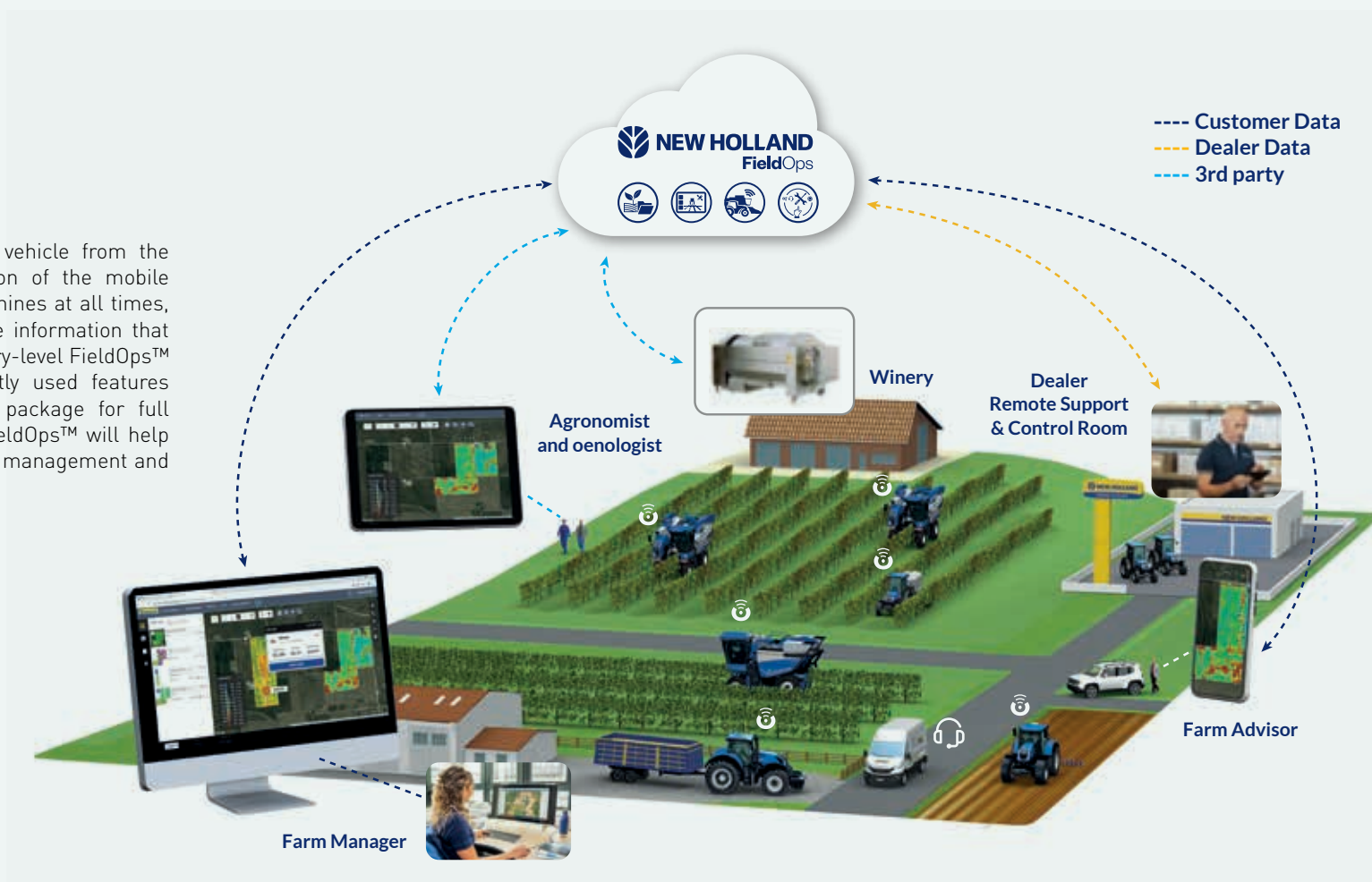
# Superconnected: Efficient Precision Farming Solutions.

New Holland's approach to PLM® can be summed up in four words: Open, Connected, Smart, Supported. With a full range of correction signals, New Holland's modular solution can be used on any machine. Intuitive, user-friendly interfaces mean you can use guidance with confidence and Precision Land Management software enables you to download and analyse yield data to fine tune inputs and reduce costs. Advanced telematics systems enable you to synchronise in-field working between machines from the comfort of your office.

## FieldOps

**FieldOps™: manage your machine from the comfort of your office**

FieldOps™ enables you to connect to your vehicle from the comfort of your office through the utilisation of the mobile network. You can stay in touch with your machines at all times, and you can even send and receive real-time information that saves time and enhances productivity. The entry-level FieldOps™ Essential package offers the most frequently used features or upgrade to the FieldOps™ Professional package for full machine monitoring and control. In short, FieldOps™ will help you to reduce your fuel bills and improve fleet management and security in one simple package.





### The optional ISOBUS Class 2

The ISOBUS Universal Terminal can be used to operate a wide range of implements including balers and sprayers. One monitor controls all applications. By using one screen you can switch between tasks even quicker and improve overall visibility.

The ISOBUS Task Controller send commands to an ISOBUS compliant implement to modify its actions based on GPS position.

- Automatically switch on/off sprayer sections
- Prevent fertilizer overlap
- Control application rates with prescription maps
- Map and log job dates
- Single display solution on New Holland equipment for running key tractor functions, auto guidance and controlling mixed fleets of implements

### RAVEN AFTERMARKET STEERING SOLUTIONS

The brand-independent Raven portfolio complement the existing PLM product portfolio allowing to choose different levels of precision and comfort while working in the field.

You can integrate your specialty tractor with:



or



#### CR7 display

Raven's lightest and most cost-efficient 7-inch display, CR7, is intuitive and easy to use. A simple widget concept, easily accessible settings, ISO Universal Terminal (UT) and Task Controller capabilities make this mighty unit an affordable plug-and-play system.

#### CR12 display

The CR12 display specialises in accurate, complex path planning — especially on rows that aren't straight or are on uneven terrain. Its premium in-cab experience is best suited for high-value crops on a small amount of land.



#### Raven DirecSteer for Assisted Steering

Raven's DirecSteer is a smart motor with internally controlled torque and electrical current, that works all while contributing to a simple, safe and silent operation.



#### Raven RS1 receiver

Raven RS1 is a fully scalable steering solution that combines GNSS, a modem and autosteer into a complete connectivity solution. Industry leading accuracy at both high and low speeds combined with quick line acquisition improves efficiency and allows you to cover more hectares per day.



# Engineered by design to meet your needs.

## The ideal system for your work

To answer all your needs, two packs are available for T4 F/N/V cab and ROPS.

The **Smart** pack to answer all your needs in a simple and efficient machine to get the job done. Find key features to simplify your work: Dual Command™ or Powershuttle transmission, VisionView™ cab, Blue Cab™ 4 or the SuperSteer™ and many other options.

The **Deluxe** pack to increase comfort and intuitive technologies in all operations, discover key features to increase your driving pleasure: Dual Command™ transmission, Terraglide™ suspended front axle, SuperSteer™ axle, rear electrohydraulic remotes, VisionView™ cab, Blue Cab™ 4 and many other options.



# Jesi plant.



**Number of workers:** around 1000

**Surface:** 185.000sqm

More than 750.000 tractors produced since 1949

**Manufacturing processes on site:**

- Driveline assembly
- Cab assembly
- Tractor assembly
- Paintshop area

**Product offering:**

T5 Auto Command™, T5 Dynamic Command™, T5 Electro Command™, T5 Dual Command™, T4 F/N/V and TK4





## 24 SPECIFICATIONS

MODELS	T4.80 CAB			T4.90 CAB			T4.100 CAB			T4.110 CAB			T4.120 CAB		
	V	N	F	V	N	F	V	N	F	V	N	F	V	N	F
FPT Engine*	F34			F36											
No. of cylinders / Capacity (cm³) / Valves / Emissions Level (n°)	4 / 3400 / 2 / Stage V			4 / 3600 / 4 / Stage V											
Rated Engine Power ISO TR14396 - ECE R120 [kW/hp(CV)]	55/75			63/86			73/99			81/110			88/120		
Max. Power @1900rpm [kW/hp(CV)]	55/76			63/87			73/100			81/111			88/121		
Rated Engine Speed (rpm)							2300								
Max. Torque ISO TR14396 (Nm)	320 @ 1300rpm			351 @ 1300rpm			407 @ 1300rpm			490 @ 1300rpm			518 @ 1300rpm		
Torque reserve (%)	40			34			34			46			42		
Horizontal Exhaust							●								
Vertical exhaust							○								
Fuel tank capacity (4WD / SuperSteer™) (Litres)	68 / -	90 / -	104 / -	68 / -	90 / 60	104 / 75	68 / -	90 / 60	104 / 75	68 / -	90 / 60	104 / 75	68 / -	90 / 60	104 / 75
AdBlue tank capacity (Litres)	-						11								
Service interval (hours)							600								
Transmission															
16x16 Powershuttle with Power Clutch (40kph) / Min. speed (kph)							● / 0.7								
32x16 Dual Command™ with Power Clutch (40kph) / Min. speed (kph)							○ / 0.7								
44x16 Dual Command™ with Power Clutch / Min. speed with Creeper (kph)							○ / 0.30								
Powershuttle with 3 reverse adjustments							●								
Electrohydraulic diff. lock							●								
Parking Lock transmission							○								
Hydraulic trailer brake valve (TMR compliant)							○								
Front axle															
4WD front axles	●	●	●	●	○	○	●	○	○	●	○	○	●	○	○
SuperSteer™ 4WD front axle	-	-	-	-	●	●	-	●	●	-	●	●	-	●	●
Terraglide™	○	○	○	○	○	○	○	○	○	○	○	○	○	○	○
Hydraulic system															
Standard pump flow + Service pump (Lpm)							64 + 36								
Optional MegaFlow™ pump flow + Service pump (Lpm)							80 + 36								
Mechanical Draft Control (MDC) with Lift-O-Matic™ Plus system							●								
Max. lift capacity at ball ends with arms horizontal (kg)	2200	2200	2520	2200	2200	2520	2200	2200	2520	2200	2200	2520	2200	2200	2520
Max. no. rear remote / couplers							4 / 8								
Electrohydraulic remotes							○								
Max mid mounted couplers							8								
Power Beyond system							○								
Front lift & PTO 1000rpm electrohydraulic dry clutches							○								
Max. front linkage lift capacity at ball ends double acting (kg)							1500								



MODELS	T4.80 CAB			T4.90 CAB			T4.100 CAB			T4.110 CAB			T4.120 CAB		
	V	N	F	V	N	F	V	N	F	V	N	F	V	N	F
<b>PTO</b>															
540 / 540E								●							
540 / 540E / 1000 and ground speed								○							
Electrohydraulic wet clutches with soft/medium/hard start								●							
<b>Operator environment</b>															
Optional LED lighting pack - Max.								3							
Fender mounted external controls								○							
Comfort Ride™ suspended cab	-	-	○	-	-	○	-	-	○	-	-	○	-	-	○
Noise level [dB(A)]								72							
<b>Dimensions &amp; Weights</b>															
Minimum overall width (mm)	1061	1229	1380	1061	1229	1380	1061	1229	1380	1061	1229	1380	1061	1229	1380
Height from rear axle to top of cab (mm)								1898							
Wheelbase (4WD / SuperSteer™) (mm)		2180 / -		2180 / -	2180 / 2436		2180 / -	2180 / 2436		2180 / -	2180 / 2436		2180 / -	2180 / 2436	
Max. permissible weight (kg)	4500	4500	4800	4500	4500	4800	4500	4500	4800	4500	4500	4800	4500	4500	4800

● Standard ○ Optional - Not available \* Developed by FPT Industrial





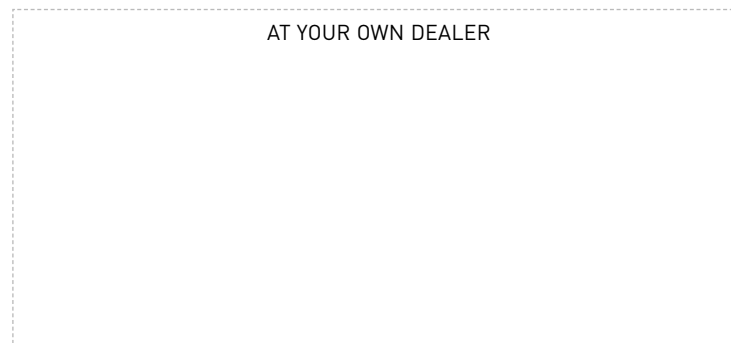
MODELS	T4.80 ROPS				T4.90 ROPS				T4.100 ROPS				T4.110 ROPS				T4.120 ROPS			
	V	N	F	FL basso	V	N	F	FL basso	V	N	F	FL basso	V	N	F	FL basso	V	N	F	FL basso
New Holland Engine*	F34				F36															
No. of cylinders / Capacity (cm³) / Valves / Emissions Level (n°)	4 / 3400 / 2 / Stage V				4 / 3600 / 4 / Stage V															
Rated Engine Power ISO TR14396 - ECE R120 [kW/hp(CV)]	55/75				63/86				73/99				81/110				88/120			
Max. Power @1900rpm [kW/hp(CV)]	55/76				63/87				73/100				81/111				88/121			
Rated Engine Speed (rpm)									2300											
Max. Torque ISO TR14396 (Nm)	320 @ 1300rpm				351 @ 1300rpm				407 @ 1300rpm				490 @ 1300rpm				518 @ 1300rpm			
Torque reserve (%)	40								34				46				42			
Horizontal Exhaust									●											
Fuel tank capacity (4WD / SuperSteer™) (Litres)	58 / -	73 / -	81 / -	64 / -	58 / -	73 / 57	81 / 65	64 / -	58 / -	73 / 57	81 / 65	64 / -	58 / -	73 / 57	81 / 65	64 / -	58 / -	73 / 57	81 / 65	64 / -
AdBlue tank capacity (Litres)	-								11											
Service interval (hours)									600											
Transmission																				
Electrohydraulic diff. lock									●											
16x16 Shuttle Command™ (40kph) / Min. speed (kph)									● / 0.7											
28x16 Shuttle Command™ (40kph) / Min. speed with Creeper (kph)									○ / 0.17											
32x16 Split Command™ (40kph) / Min. speed (kph)									○ / 0.7											
16x16 Powershuttle with Power Clutch and 3 reverse adjustments (40kph) / Min. speed (kph)									○ / 0.7											
32x16 Dual Command™ with Power Clutch and 3 reverse adjustments (40kph) / Min. speed (kph)									○ / 0.7											
44x16 Dual Command™ with Powerclutch and 3 reverse adjustments (40kph) / Min. speed with Creeper (kph)									○ / 0.30											
Parking Lock transmission									○											
Hydraulic trailer brake valve (TMR compliant)									○											
Front axle																				
4WD front axles	●	●	●	●	●	○	○	●	●	○	○	●	●	○	○	●	●	○	○	●
SuperSteer™ 4WD front axle	-	-	-	-	-	●	●	-	-	●	●	-	-	●	●	-	-	●	●	-
Hydraulic system																				
Standard pump flow + Service pump (Lpm)									64 + 36											
Optional MegaFlow™ pump flow + Service pump (40kph) / Min. speed (Lpm)									80 + 36											
Mechanical Draft Control (MDC) with Lift-O-Matic™ Plus system									●											
Max. lift capacity at ball ends with arms horizontal (kg)	2200	2200	2520	2520	2200	2200	2520	2520	2200	2200	2520	2520	2200	2200	2520	2520	2200	2200	2520	2520
Max. no. rear remote / couplers									3+2 /10											
Max. mid mounted couplers									4											
Power Beyond system									○											
Front lift & PTO 1000rpm electrohydraulic dry clutches									○											
Max. front linkage lift capacity at ball ends double acting (kg)									1500											

MODELS	T4.80 ROPS				T4.90 ROPS				T4.100 ROPS				T4.110 ROPS				T4.120 ROPS			
	V	N	F	FL basso	V	N	F	FL basso	V	N	F	FL basso	V	N	F	FL basso	V	N	F	FL basso
PTO																				
540 / 540E											●									
540 / 540E / 1000 and ground speed											○									
Electrohydraulic wet clutches with soft/medium/hard start											●									
Operator environment																				
ROPS Compliant											●									
Optional LED lighting pack - Max.											3									
Fender mounted external controls											○									
Dimensions & Weights																				
Minimum overall width (mm)	1061	1229	1380	1472	1061	1229	1380	1472	1061	1229	1380	1472	1061	1229	1380	1472	1061	1229	1380	1472
Height from front axle to hood (mm)	1011	1011/1026		965	1011	1011/1026		965	1011	1011/1026		965	1011	1011/1026		965	1011	1011/1026		965
Wheelbase [4WD / SuperSteer™] (mm)	2180 / -				2180 / -	2180 / 2436		2180 / -	2180 / -	2180 / 2436		2180 / -	2180 / -	2180 / 2436		2180 / -	2180 / -	2180 / 2436		2180 / -
Max. permissible weight (kg)	4500		4800		4500		4800		4500		4800		4500		4800		4500		4800	

● Standard ○ Optional – Not available \* Developed by FPT Industrial







[www.newholland.com/uk](http://www.newholland.com/uk) - [www.newholland.com/ie](http://www.newholland.com/ie)



The data indicated in this folder are approximate. The models described here can be subjected to modifications without any notice by the manufacturer. The drawings and photos may refer to equipment that is either optional or intended for other countries. Please apply to our Sales Network for any further information. Published by New Holland Brand Communications. BTS Adv. - Printed in Italy - 09/24 - (Turin) - 240006/INB